

## CYPRUS

2144	⊙	BRITISH OCCUPATION (1), 1/2 d. plate 15. VF	50
2145	(★)	(2), 1 d. plate 181. F	60
2146	★	(2), 1 d. plates 201, 215, 217, 218, 4 copies. F	35
2147	★	(2), 1 d. plates 205, 208, 215, 218, 4 copies. F	50
2148	★	(2), 1 d. plates 215, 216, 218, 3 copies. F	26
2149	★	(2), 1 d. plate 215. VF	9
2150	★	(2), 1 d. plate 216. VF	12
2151	(★)	(2), 1 d. plate 216. F	8
2152	(★)	(2), 1 d. plate 220. F	190
2153	★	(4), 4 d. olive. F	55
2154	(★)	(4), 4 d. olive. F	30
2155	⊙	(4), 4 d. F	90
2156	★	(7), 1/2 d./1 d. plate 181. VF	65
2157	★	(7), 1/2 d./1 d. plate 205. VF	40
2158	(★)	(7), 1/2 d./1 d. plate 205. RR and F	10
2159	★	(9), 1/2 d./1 d. plate 215. F	22
2160	★	(9), 1/2 d./1 d. 13 mm. plate 218. VF	36
2161	★	(9), HALF PENNY/1 d., 13 mm., plate 218. F	30
2162	★	(10), 30 pa./1 d. plate 216. VF	65
2163	(★)	(10), 30 pa./1 d. plate 217. F	60
2164	(★)	(10), 30 pa./1 d. plate 220, stain spot. F	25
2165	★	(11), 1/2 pi., die I, watermarked with "CC". Heavily hinged. F	100
2166	⊙	(11/13), 3 values, die I, watermarked with "CC". VF	60
2167	⊙	(11, 13), 2 values, die I, watermarked with "CC". VF	40
2168	⊙	(11), 1/2 pi. die I, watermarked with "CC". VF	25
2169	⊙	(12), 1 pi. die I, watermarked with "CC". VF	15
2170	⊙	(13), 2 pi., die I, watermarked with "CC". VF	15
2171	⊙	(16/22), 7 values cpl. set, watermarked with "CA", die I. VF	70
2172	⊙	(16/21), 6 values, die I, watermarked with "CA". VF	45
2173	⊙	(23), 1/2 d./1/2 d. die I, watermarked with "CC". VF	35
2174	★	(25), 1/2 d./1/2 d. die I, watermarked with "CA". VF	90
2175	★	(25), 1/2 pi./1/2 pi. die I, watermarked with "CA", part of gum. F	60
2176	★	(27), 1/2 1/2 pi. (6 mm.) small gum crease. F	90
2177	⊙	(27), 1/2 d./1/2 d. space 6 mm., die I, watermarked with "CA". VF	60
2178	★	(35/37, 39, 41/43), 7 values. VF	50
2179	⊙	(55), 5 pa. in B4. VF	6
2180	★	(95/114), 20 values all VF	110
2181	☒	COVER posted to Lefcosia, franked with 1/2 pi., 3/4 pi. (VI. 97, 99), cancelled with cds "LARNACA 4 JA. 30". VF	30
2182	★	(124, 125), 2 values. VF	45
2183	★	(145/163), 19 values cpl. set. VF	70
2184	⊙	"TROODOS OFFICIAL PAID" (type 2), "POLITIS KHRISOKHOU" (type 2), "LIMASOL" (type 10A), "LARNACA" (type 12), "AMIANDOS", "KELOKETARA", "PEDOULA" (type 17). F-VF	15
2185	⊙	"CALAVASSO E.R. RURAL SERVICE". VF	15
2186	⊙	"KARPAS VR RURAL SERVICE". VF	15

2187	⊙	"KARPAS VR RURAL SERVICE". VF	15
2188	⊙	"MARATHASSA RURAL SERVICE". VF	10
2189	⊙	"MARATHOVOUNO V.R. RURAL SERVICE". VG	3
2190	△	"MESONA GR RURAL SERVICE" postmark. SUPERB	35
2191	⊙	"MORPHOU" type 4 on 1/2 pi., 1/2 pi., 2 pi., 1/2 pi. (VI. 28, 35, 38, 45). VF	5
2192	⊙	"MYRTON V.R. RURAL SERVICE". F	10
2193	⊙	"MYRTON V.R. RURAL SERVICE". VF	10
2194	△	"NIKOS GR RURAL SERVICE". VF	15
2195	⊙	"PARALIMNI GR RURAL SERVICE" postmark. VF	5
2196	⊙	Two fiscal stamps of Cyprus (Victoria), used. VF	12
2197	★★	REPUBLIC OF CYPRUS (1/15), 15 values cpl. set. VF	80
2198	★★	(24/36), 13 values cpl. set. VF	40
2199	★★	(47/49), 3 values cpl. set. VF	40
2200	★★	(209/222, 224/226), 5 cpl. sets, overprinted with "SPECIMEN". VF	24
2201	★★	2 booklets, one containing 100 m. Montreal (VI. 281 X 1) and the other 10 m. Definitive 1980 (VI. 350 X 5). VF	10
2202	★★	(372/402), 1981/1982 cpl. sets, overprinted with "SPECIMEN" (on album leaves). VF	38
2203	★★	(452/476), 1985 cpl. sets, overprinted with "SPECIMEN" (on album leaves). VF	36
2204	★★	(477/497), 1986 cpl. sets, overprinted with "SPECIMEN" (on album leaves). VF	35
2205	★★	(498/518), 1987 cpl. sets, overprinted with "SPECIMEN" (on album leaves). VF	35
2206	★★	(521/537), 1988 cpl. sets, overprinted with "SPECIMEN" (on album leaves). VF	30
2207	★★	(538/546, 548/553, 558/572), 1989 cpl. sets, overprinted with "SPECIMEN" (on album leaves). VF	55
2208	☒	(610/612), Official FDC of Christmas 1991 and sheetlet of 3 sets, cancelled to order with commemorative F.D. cds. VF	20
2209	★★	(633/639, 641/650), 1993 cpl. sets, overprinted with "SPECIMEN" (on album leaves). VF	40
2210	☒	FDC of Cyprus 1964/1980 catalogue value 175 □, very favourable starting price. VF	65
2211	☒	3 PC issued by the post office of Cyprus, one with the corresponding stamp and commemorative cds. VF	15
2212	☒	Cyprus Collection of commemorative cds (54 illustrated covers) some of them in quantity, housed in special album. Mostly wine festival. VF	120

Starting prices in euro. Commission 22,14% (including V.A.T.)  
Bids under starting price will not be accepted.

Εντολές με e-mail. e-mail bids. (vlastos@otenet.gr)

Θα λάβετε επιβεβαίωση. Μην στέλνετε e-mail μετά τις 13.00 την ημέρα της δημοπρασίας.  
You will receive confirmation. Do not send e-mails after 13.00 the day of the auction.

Η ΔΗΜΟΠΡΑΣΙΑ ΘΑ ΓΙΝΕΙ ΣΤΟ ΞΕΝΟΔΟΧΕΙΟ:

**CROWNE PLAZA**  
ATHENS CITY CENTRE

THE AUCTION WILL TAKE PLACE IN:

40, MICHALAKOPOULOU Str. - ATHENS 115 28 - GREECE, Tel. +30-210.72.78.000, Fax. +30-210.72.48.187

**ΠΡΟΣΟΧΗ!** Στείλτε τις εντολές σας όσο νωρίτερα μπορείτε. Δεν μπορούμε να εγγυηθούμε την σωστή διαχείριση των εντολών που φτάνουν μία ώρα (ή λιγότερο) πριν την έναρξη της δημοπρασίας.

**ATTENTION!** Send as early as possible your bids. We cannot guarantee the correct process of bids that arrive one hour (or less) before the auction starts.





2179



2180



2181



2182



2183



2184



2185



2186



2187



2188



2189



2190



2191



2192



2193



2194



2195



2196



2197



2198



2199



2200

CONTACT THE SPECIALISTS:  
MENELAOU  
93 PEMBERTON ROAD  
HARRINGAY  
TEL. 01-340.2322  
LONDON N.4 IAY  
ENGLAND

2201



2202



2204



2203





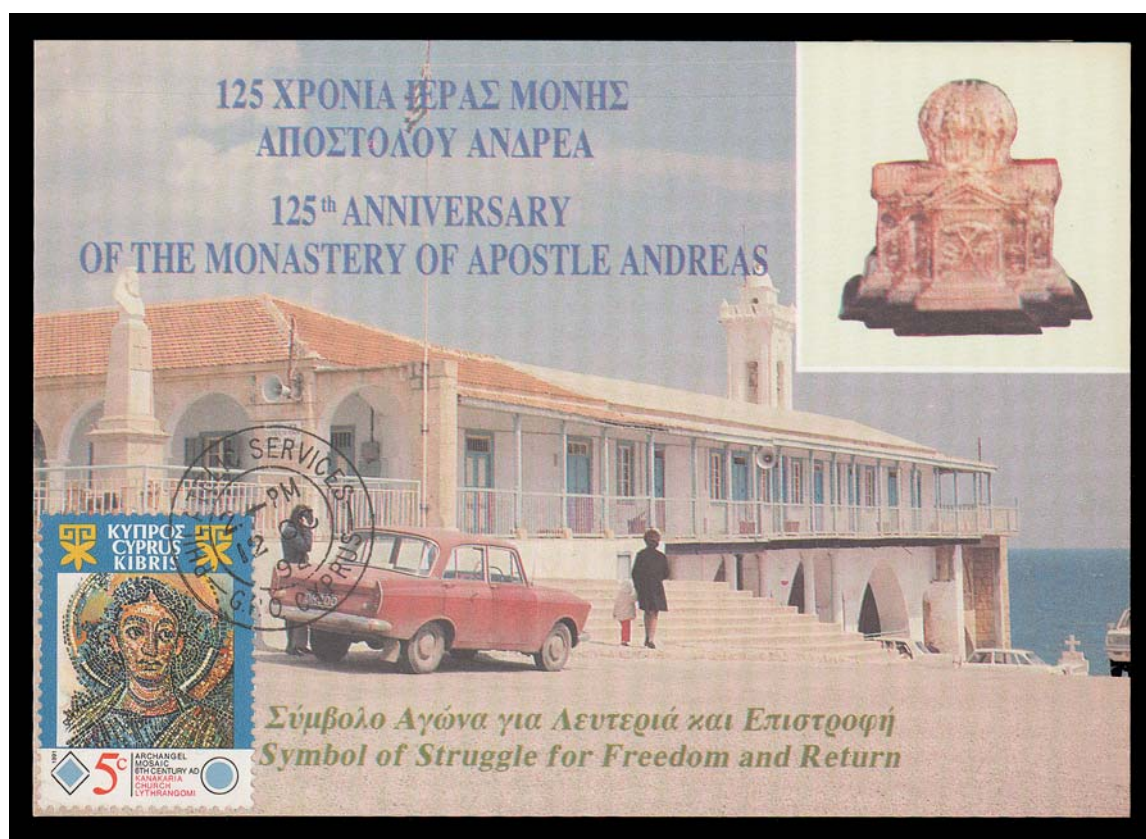
2208



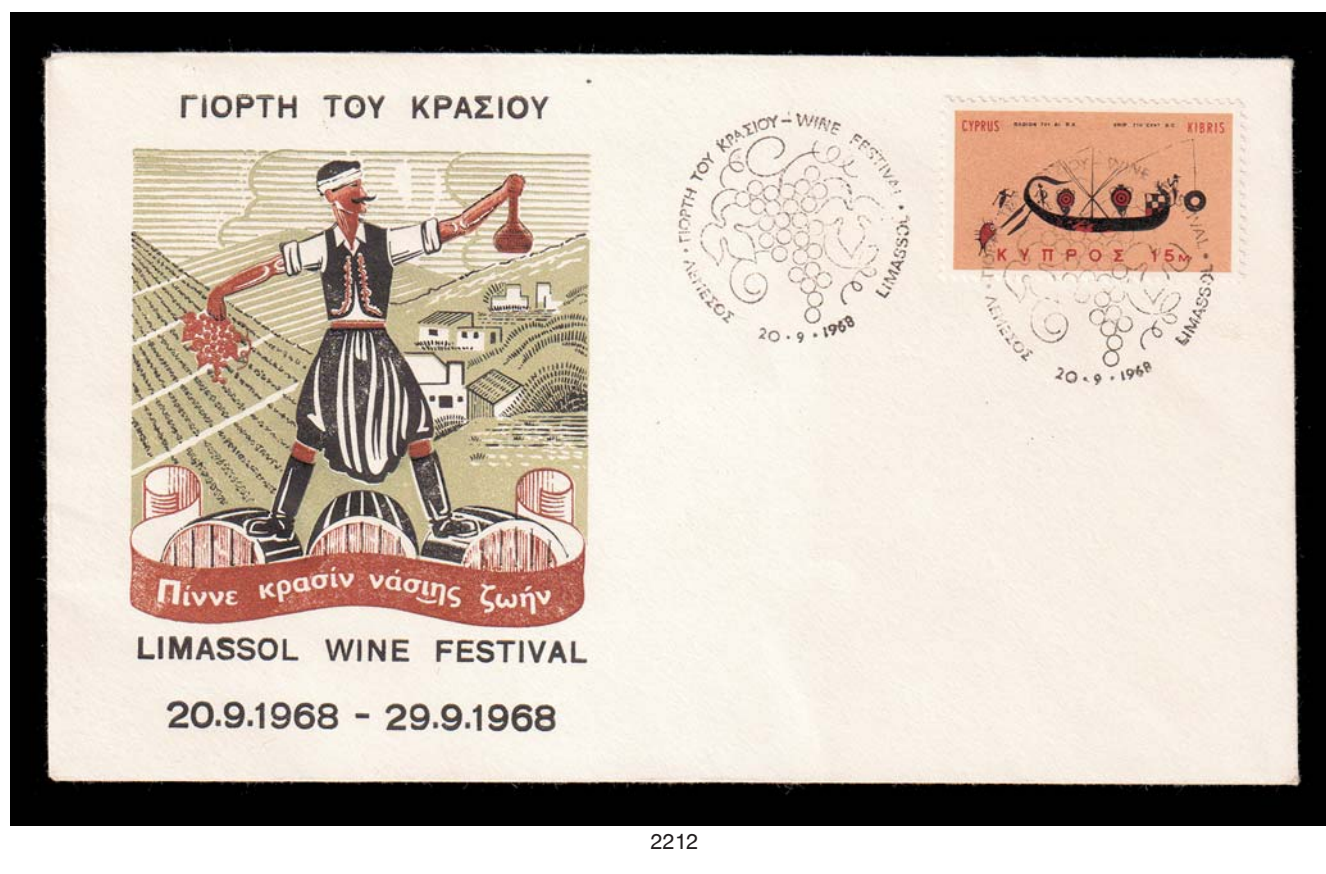
2209



2210



2211



2212